

The Surf Club Four Seasons Private Residences

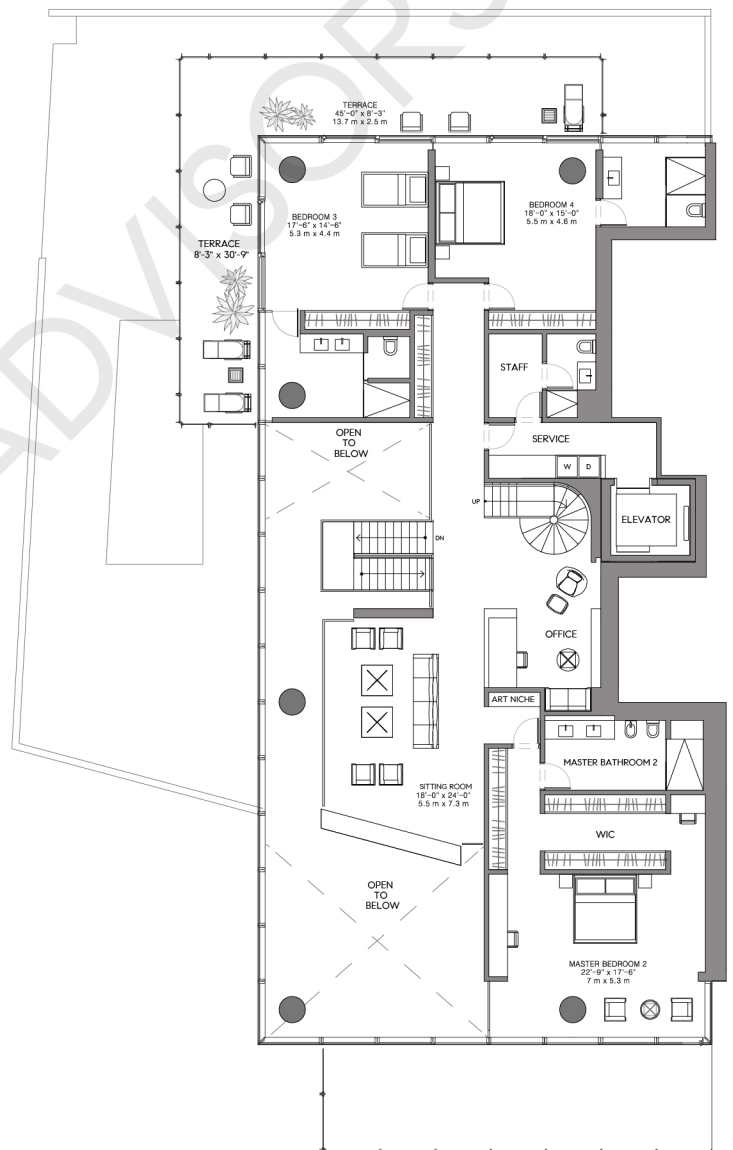
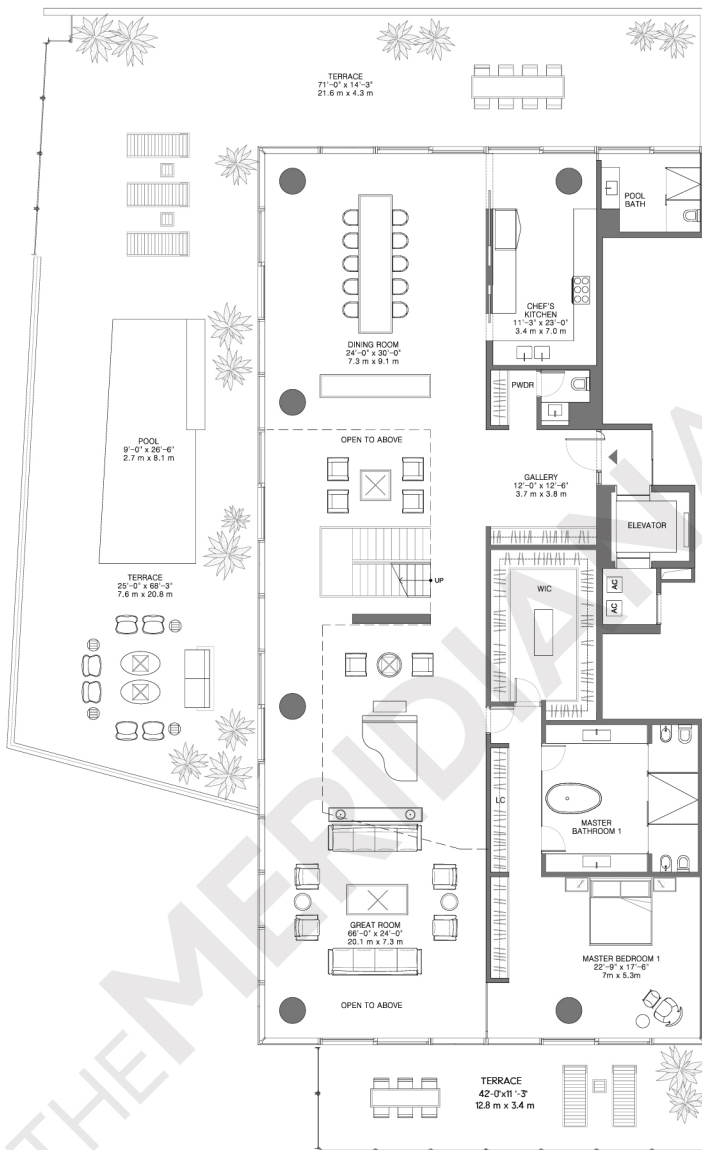
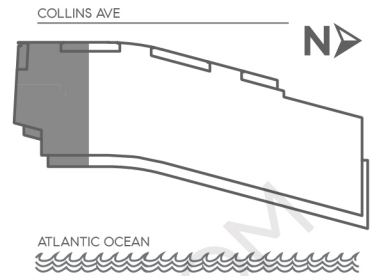
9001 Collins Avenue
Surfside

Closing Homes, Opening Doors

TheMeridianAdvisors.com
305.537.6795

Floor Plan PH1 Residences 11 - 12

| | Area | Sq. Ft. | Sq. M. |
|---------------|-------|---------|--------|
| 4 Bedrooms | Int. | 7,486 | 695 |
| 6 Bathrooms | Ext. | 3,791 | 352 |
| 6 Powder Room | Roof | 2,597 | 241 |
| | Total | 13,874 | 1,288 |



All dimensions are approximate and all floor plans and development plans are subject to change without notice.

The Surf Club Four Seasons Private Residences

9001 Collins Avenue
Surfside

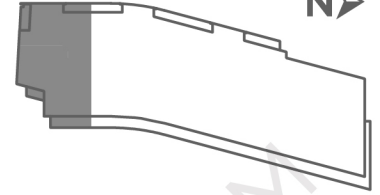
TheMeridianAdvisors.com
305.537.6795

Closing Homes, Opening Doors

Floor Plan PH1 Residences Roof

| | Area | Sq. Ft. | Sq. M. |
|---------------|-------|---------|--------|
| 4 Bedrooms | | | |
| 6 Bathrooms | Int. | 7,486 | 695 |
| 6 Powder Room | Ext. | 3,791 | 352 |
| | Roof | 2,597 | 241 |
| | Total | 13,874 | 1,288 |

COLLINS AVE



ATLANTIC OCEAN

